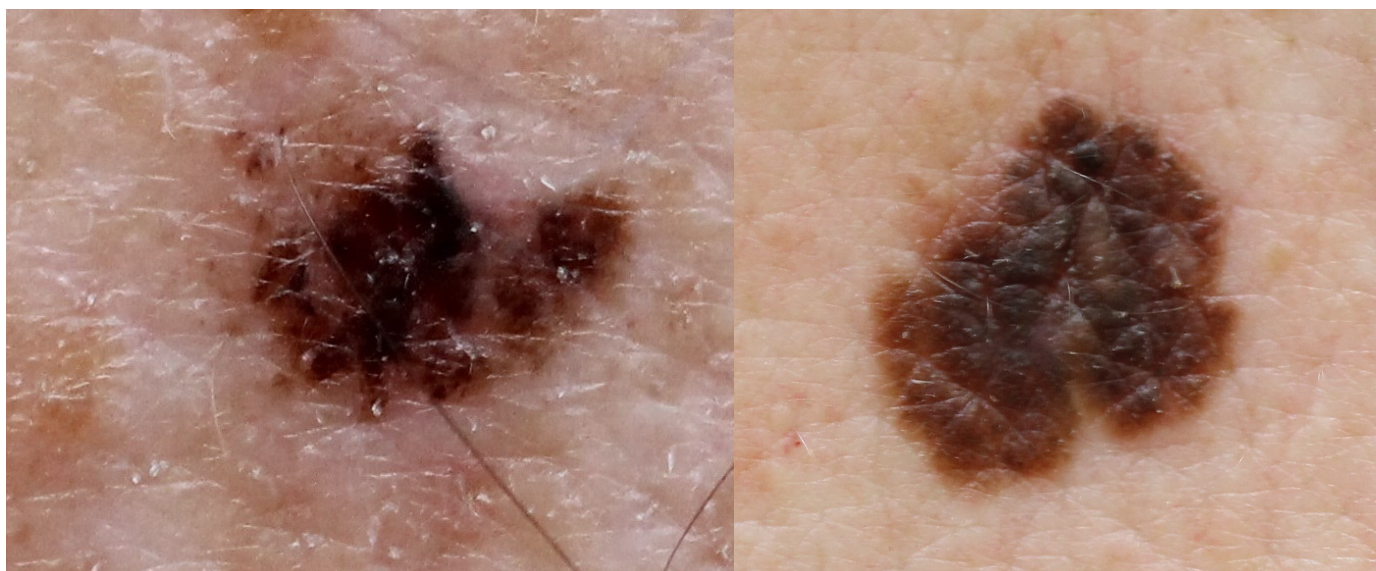


Early melanomas and different colours

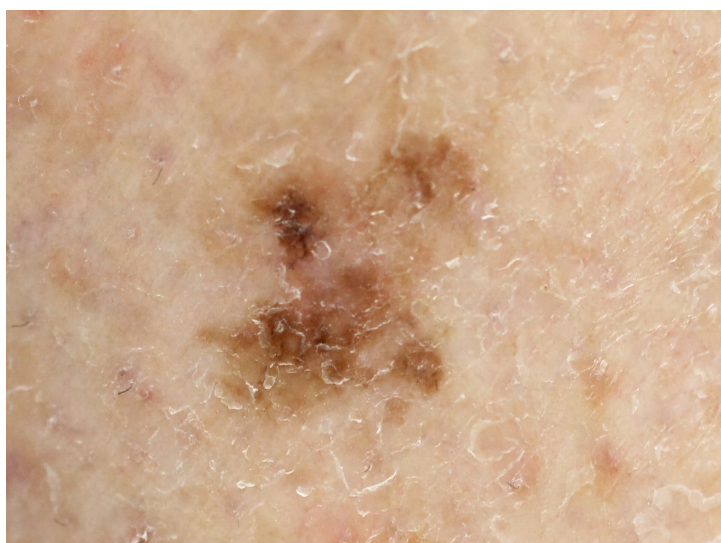
Early melanomas or in-situ melanomas are skin cancers which are located in the top layer of the skin (epidermis) only that arise from cells called melanocytes. These cancers haven't spread into the deep layers of the skin yet. If treated at this stage the prognosis is excellent. If untreated the melanoma grows thicker and can spread to other parts of the body .

When looking at your own pigmented skin spots the presence of multiple colours can help identify whether it is suspicious for a melanoma or not. If more than one colour is present the likelihood of it being a melanoma is higher.

These are two photos of early melanomas that started on the back and there are a number of colours present including light brown, dark brown and grey.



This is a pigmented spot around one centimetre in diameter which started on someone's leg. There is light brown, dark brown and grey present and it is an early melanoma.



If you notice that a skin spot has multiple colours then have it checked out. At Dalyellup Skin Care Clinic Dr. Darryn Rennie and Dr. Alison Timms are experienced and have qualifications in skin cancer medicine. An appointment can be booked by calling 97956422 and the clinic is located at Unit 11, 135 Norton Promenade, Dalyellup.